

TARRAGON THEATRE

Visual Story for the Performance of

Behind the Moon



Tarragon Theatre, Extraspace

Preview Dates:

Tuesday, February 21 to Tuesday, February 28

Performance Dates:

Friday, March 1 to Sunday, March 19

Visual Story for the Performance of

Behind the Moon

Visual stories were developed in priority to autistic and neurodivergent audiences, but anyone may find them helpful.

This information can also help you get ready for your visit to Tarragon.

It can help you understand what your experience might be like.

If you would like more information or want to visit the theatre before coming to a show, please contact Heather Caplap, Tarragon's Education and Community Engagement Manager at education@tarragontheatre.com or 416 536 5018 ext. 249

A list of things in this document:

Page 4 - How to get here

- By Car
- By TTC
- By Bike

Page 7 - The Building

Page 8 - The Lobby

Page 9 - The Box Office

Page 10 - The Bar and Water
Fountains

Page 11 - Women's Washrooms

Page 12 - Men's Washrooms

Page 13 - The Studio Lobby

- Accessible Washroom
/ Family Washroom
- All Genders
Washroom

Page 15 - The Extraspace
Theatre

Page 17 - Show Information

Page 18 - Actors and
Character Introduction

Page 19 - Plot Summary

Page 21 - Things to Look For

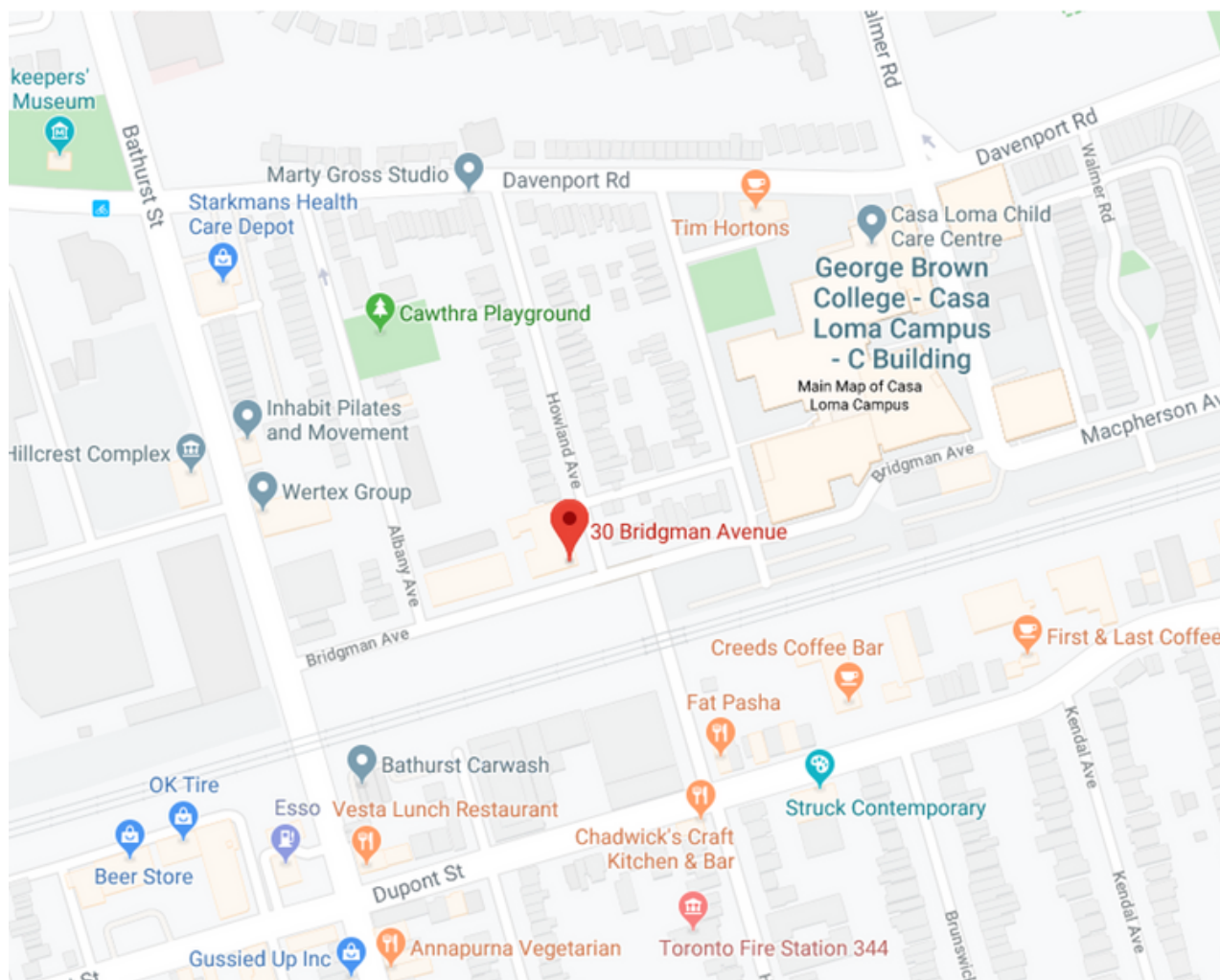
Page 22 - Set Description

Page 23 - Contact Information

How to Get Here

Tarragon Theatre is located at 30 Bridgman Avenue in Toronto. It is important to note that our address is on Bridgman Avenue, but our main entrance is on Howland Avenue. There is a bench with a back you can sit on beside the main entrance.

We are one block north of Dupont Street, one block south of Davenport Avenue, and two blocks east of Bathurst Street.



[image shows Tarragon Theatre's location with a red pin on a map of the nearby area]

By Car - Parking Information

Tarragon Theatre is at the corner of Howland and Bridgman Avenues. One block north of Dupont Street, one block south of Davenport Avenue, and two blocks east of Bathurst Street.

If you are driving to the theatre we recommend parking in the UnitPark parking lot on the southwest side of Bridgman across from the theatre. There is a \$5 evening flat rate.

There is a second parking lot at the southeast corner of Howland and Bridgman. You can find more information about that parking lot here:

<https://www.parkme.com/lot/98367/lot-b-toronto-on-canada>

By TTC

Dupont Station: If you are in the north exit of Dupont station turn right to go west along Dupont Street. If you are in the south exit where there is a rounded bench outside, turn left to go west. When going west on Dupont you will pass a Shoppers Drug Mart soon after exiting the station. Turn right on Howland Avenue and go one block north. Howland Avenue is one block west of Spadina Avenue. The theatre will be on your right.

Bathurst Station: From Bathurst Station, take the 7C Bathurst bus north to the first stop after Dupont Street. The stop is announced as “Bridgman Avenue”. From there, go right and travel two blocks east on Bridgman Avenue to the theatre.

You can use this link to the TTC website to plan your trip to the theatre. There is a check box below the “start” and “end” fields that you can check to plan a mobility device accessible trip:

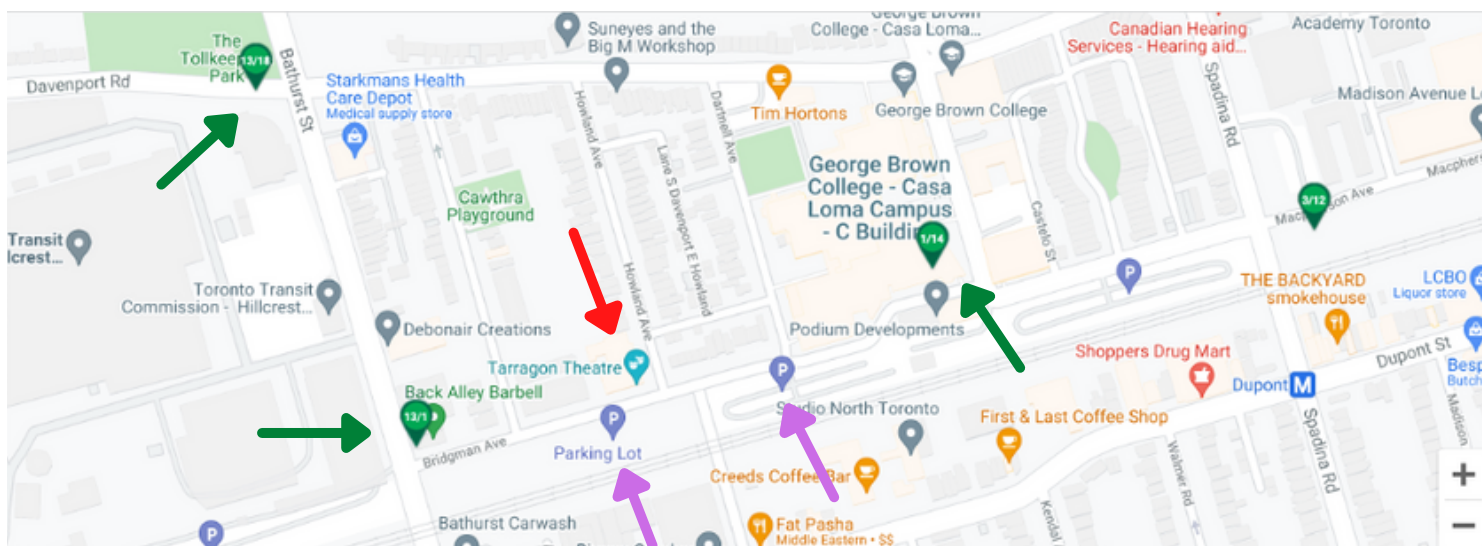
<https://www.ttc.ca/trip-planner>

By Bike

There is a bike lane on Davenport Avenue. You can turn south on Howland from Davenport to reach the main entrance of the theatre. There are six ring posts outside the theatre you can use to lock your bike. There are two to the left of the door, two around the corner and two more just up the street to the right of the door.

There are two Toronto Bike Share stations close to the theatre. One just west of the theatre on the corner of Bridgman and Bathurst and one just east of the theatre on the corner of Bridgman and Walmer Rd.

The image below uses arrows to show where the closest parking lots and Toronto Bike Share stations are. The red arrow shows where the theatre is, the purple arrows show where the parking lots are, and the green arrows show where the Toronto Bike Share stations are.



[image shows Tarragon Theatre's location on a map with nearby parking lots and Toronto Bike Share stations]

The Building

The Tarragon Theatre is a large brick building where plays are created and performed. There are two theatres in the building; the Mainspace which seats 200 people and the Extraspace which seats 100 people. Both theatres have accessible seating.



[image of the entrance to Tarragon Theatre with an arrow pointing at a button, situated on the left side of the front doors. The arrow says "Door Button"]

The main entrance to our building on Howland Avenue near the corner of Bridgman Avenue. The sidewalk is level leading up to the glass double doors. On your left there is a button you can press to open the door. This button sometimes gets stuck in the cold weather and you may need to press it more than once. Our staff are happy to help if needed.

The Lobby

When you come in from outside you will enter the lobby. Below is a picture of what the lobby looks like when you enter from the front doors. The lobby is brightly lit and there may be music playing. We have painted the lobby since these photos were taken, some of the walls are now blue. The art on the walls changes depending on the show.



[image of the lobby with art on the walls and people standing around]

The lobby is where audience members wait before going into a theatre to experience a show. In the lobby you can sit on a bench, use the washrooms, and buy a snack or drink from the bar.

If you enter through the main doors, the box office is on your left. The box office is where you can purchase a ticket if you haven't already or connect with a staff member. The doors directly ahead of you go into the Mainspace theatre and to your right are the doors to the Extraspace theatre, the bar, and the washrooms. *Behind the Moon* will take place in the Extraspace. If you need help directing to the theatres, please approach a volunteer or ask at the box office.

The Box Office

The box office is where you can buy a ticket to see the show. If you already bought a ticket it will have been emailed to you. If you wish, you can pick up a printed ticket at the box office. The box office staff will ask you for your first and last name to find your ticket. This is what the box office looks like when you come from the lobby.



[image of people sitting and standing in the box office area]

This is the box office window with two of our box office staff. They are here to help.



[image of two box office staff in the box office window]

The Bar and Water Fountains

The bar is where you can buy snacks or drinks to have in lobby. It is to the right of the lobby and beside the Extraspace doors. The bar sells alcoholic and non-alcoholic drinks. People may be drinking alcohol in the lobby. The bar is not open during Wednesday matinees.



[image of the bar and bartender]

Beside the bar are water fountains where you fill up your water bottle or take a drink.



[image of a person drinking from the water fountain with other people standing around in the lobby]

The Women's Washrooms

Tarragon Theatre has 4 washrooms. The women's washroom is on the main floor just past the bar. The men's washroom, accessible / family washroom, and all gender washroom are on the second floor. You can use stairs or the elevator to get to the second floor. The stairs and elevator are to the right of the women's washroom.

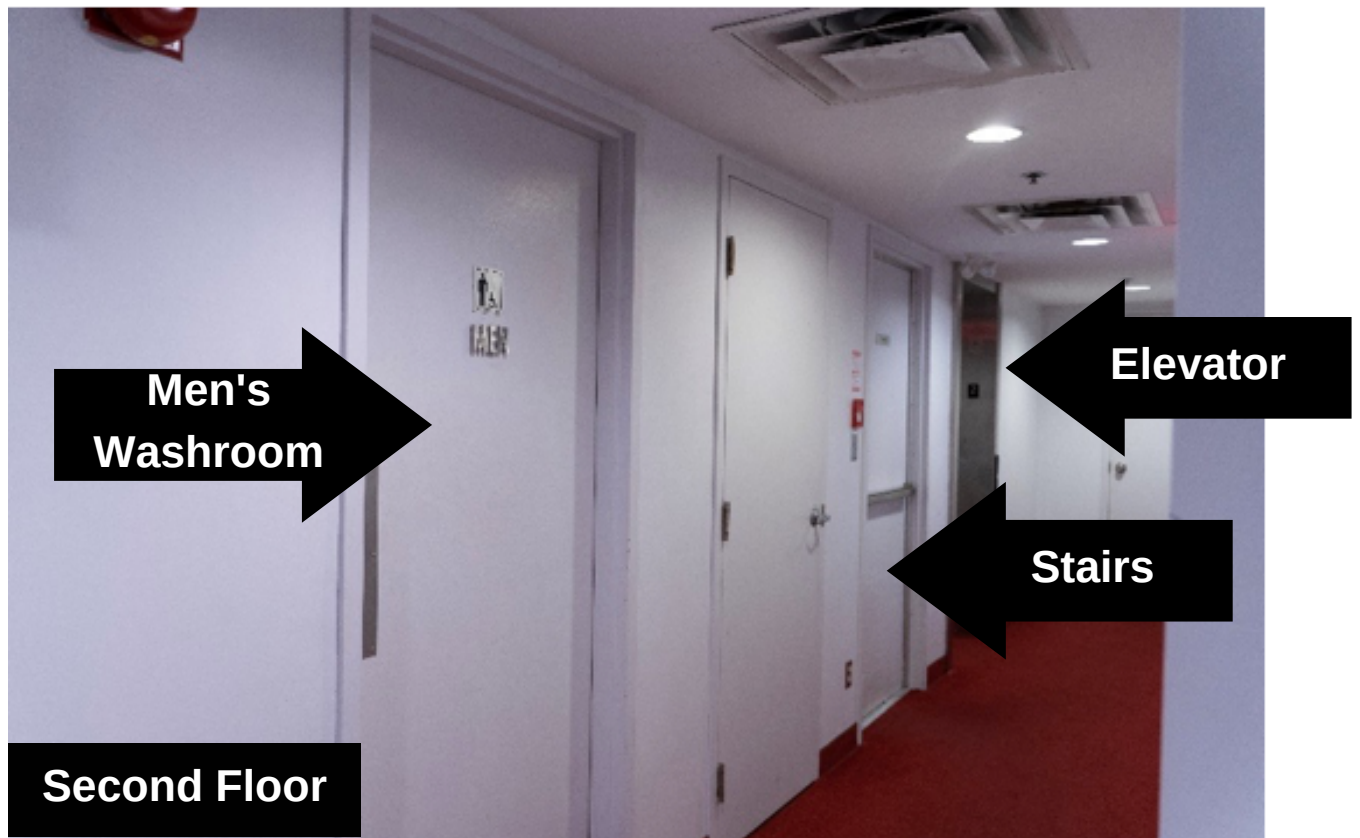
The women's washroom has 4 stalls. This is what the doors to the women's washroom, stairs, and elevator look like on the first floor.



[image of the doors to the women's washroom, stairs, and elevator, with arrow indicating where each is]

The Men's Washrooms

The men's washroom has 2 stalls and 2 urinals. To get there, take the stairs or the elevator to the second floor and turn right. This is what the doors to the men's washroom, stairs, and elevator look like on the second floor.



[image of the doors to the men's washroom, stairs, and elevator with arrow indicating where each is]

The Studio Lobby - Accessible / Family Washroom, All Genders Washroom

The Studio Lobby is where the accessible / family washroom and all genders washrooms are. To get there, take the stairs or the elevator to the second floor and turn left down the hallway. You will pass through an open doorway on your way down the hallway. This, and the following doorways, are the most narrow doorways in Tarragon. They are 33 inches wide. At the end of the hallway, turn right to enter the Studio Lobby. If the door is closed, there is a push button to the right of the door to open it.

Below is what the entrance to the studio lobby looks like when you come from the hallway.



[image of the entrance to the Studio Lobby with arrows pointing to the 'Door Button' and 'Studio Lobby']

The Studio Lobby - Accessible / Family Washroom, All Genders Washroom

When you enter the Studio Lobby, directly to your left is the accessible / family washroom. Further into the room, but still on your left is all genders washroom.

There is a push button to open the door of the accessible / family washroom. The door button is to the right of the door. The accessible / family washroom is large enough for a power chair to turn around in. There is also a change table in this washroom.

The all genders washroom has 2 stalls. It can be used by anyone who wants to use it.

Below is an image of the Studio Lobby.

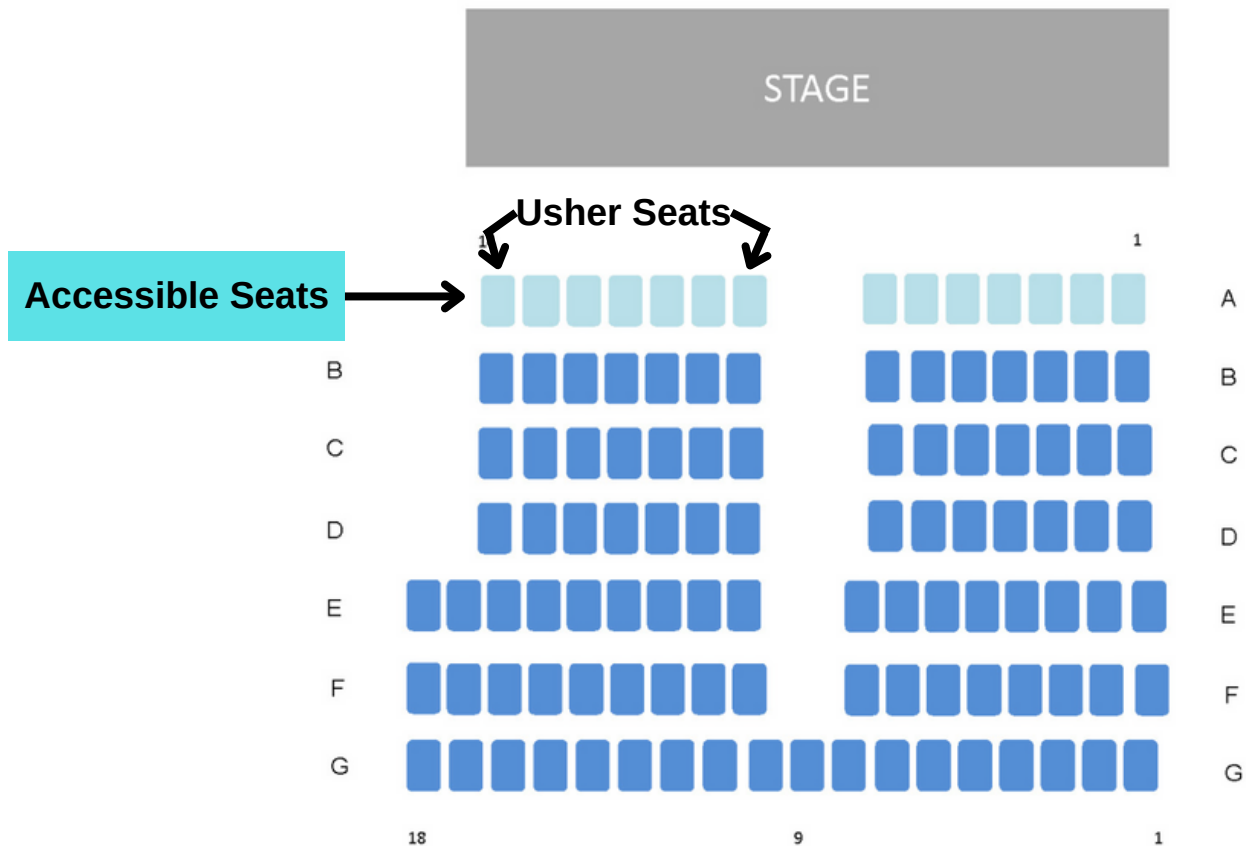


[image of the Studio Lobby with arrow pointing to the 'Accessible Washroom', 'Door Button', and 'All Genders Washroom']

The Extraspace Theatre

The Extraspace is the smaller of our two theatres. It can seat 100 people. If you need accessible seating please let the box office staff know. The doors to the Extraspace are to your right when you enter from the lobby. The doors are beside the bar and water fountains. A volunteer usher will ask to see your ticket when you enter. There is assigned seating in the Extraspace. A volunteer usher can help you find your seat.

The lights will be on and people may be talking before the show starts. Right before the shows begins a box office staff member will go to front of the theatre and make an announcement. They will then exit, the theatre doors will close, the lights will go down and the show will begin.



[image of the seating chart for the Extraspace with arrows pointing to where the ushers usually sit]

The Extraspace Theatre



[image of the Extraspace entrance]



[image of where the audience sits in the Extraspace]



[image of the Extraspace stage from the audience]

Information about the show



Please be advised that this performance includes the mention of depression and suicide, death of a child, as well as depictions of violence.

The running time is 2 hours and 10 minutes including one 15 minute intermission.

This is no re-entry during the performance.

[Click here to check out the program](#)

[Click here for the Audience Resource Guide](#)

Actors and Character Introduction



Ali Kazmi
Ayub



Husein Madhavji
Jalal



Vik Sahay
Qadir Bhai



The Plot Summary

The show opens with Ayub cleaning the floor of the closed restaurant, Jalal walks in and asks for food. They converse about food and Jalal takes the food and leaves the restaurant.

Next we open up on Ayub opening the restaurant as Qadir Bhai enters and reminds Ayub to keep the place clean and that he is looking into opening another restaurant in Montreal. Ayub says he wants to visit his family, Qadir Bhai says he is needed at the restaurant.

We see Ayub cleaning again as Jalal knocks on the door. Jalal sits down as Ayub tells story's and cleans, Jalal talks about his taxi and then leaves.

Qadir Bhai enters and announces that he is opening a restaurant location in Montreal. He tells Ayub about his humble beginnings, gives Ayub an iPhone, and gets a phone call from his french lawyer. He leaves Ayub to clean the floors and Jalal arrives with a gift for Ayub. The two talk about careers, immigration, and a noise that Ayub hears. Jalal finds Ayub's bedroom, talks about this gift, and leaves. Ayub talks to himself about his wife and son. He talks to an imaginary rat and screams.

There is then a 15 minute intermission

The Plot Summary

We start the second act with Ayub trying to catch a rat with chocolate. Qadir Bhai enters and announces his son's engagement, that Ayub will cook dinner for their family dinner, and gives Ayub his son's old clothes. Qadir Bhai finds the gift but Ayub says he must return it. Qadir Bhai reminds him to collect the receipt and clean the tiles.

Ayub is asleep on the tiles as Jalal and Qadir Bhai enter. Qadir Bhai gets upset that Ayub didn't come to his house to cook dinner and leaves. Jalal asks Ayub to pray with him. Jalal talks about his wife, child, and his past mistakes.

Ayub is cleaning the restaurant as Qadir Bhai enters. Qadir Bhai tells him about their family dinner, he tells him that he's going to Montreal, and talks to him about sacrifices. Ayub then becomes upset, a fight ensues.

Ayub and Jalal and him share a cup of tea. They pray and visualize together.

Things to look for

There are no Relaxed Performances for *Behind the Moon*.

There will be a Deaf Interpreted performance on March 11th. There will also be two Interpreters to support the Front of House team.

Every transition for *Behind the Moon* is a snap to black. There are various street, wind, and rain sounds.

There are several times where the florescent lights gently flicker for a moment.

The characters Ayub and Qadir Bhai fight each other in the second act. At the end of the fight Ayub bites Qadir Bhai's ear, blood can be seen on Ayub's mouth. No actor is hurt, it is a staged fight with stage blood

There are many instances of loud shouting, chanting, door closing, and placing of containers.

Set Description

The set is the recreation of an Mughlai restaurant in Toronto. There is a tiled floor, with tables, chairs, and a buffet food warmer in the back left corner. On the top right of the stage there is a door, on the other side of the door there is a hanging tree branch. On the bottom right of the stage there is another door that leads to the basement of the restaurant. There are florescent lights hanging from the ceiling.



[images of the set of *Behind the Moon*]
Set Design: Michelle Tracy

Thank you for reading the
Behind the Moon Visual Story.

If you have any feedback about
the show or accessibility at
Tarragon please contact

Heather Caplap at
education@tarragontheatre.com
416 536 5018 ext. 249