



The Haunting Visual Story

Performances for one audience member at a time:

January 12-20, 2024

45 minute time slot per audience member

Questions? Contact: unspuntheatre@gmail.com

ABOUT THE SHOW

Performance Time

- *The Haunting* is a performance for one audience member per performance time. Check your ticket or email confirmation for the exact time you've selected, or contact patronservices@tarragontheatre.com to help determine your specific performance time.
- *The Haunting* is approximately 45 minutes long. Please arrive a few minutes before your start time. Due to the scheduling of the performance, it is very difficult to accommodate a late start time.
- If you're unable to make your performance time, please contact patronservices@tarragontheatre.com as soon as you can to let them know.

Environment

- The performance space is in a dressing room in the theatre. The lights will be dim, and some lights will flicker or turn off during the performance. None of this will happen suddenly. There will be lamps and desk lights throughout the space.
- There are no major sound changes during the performance. We will use archival and pre-recorded text and interviews. If you can't hear the audio, let Shira know and she will try to adjust the volume for you.
- The performance space is small and will be crowded with objects. You'll be invited to sit and lie down during the performance, but you can do what feels best for your body.

Taking a Break

- The Haunting is a flexible performance-in-progress, and Shira can make adjustments to accommodate you. If you need to pause or stop during the performance, let her know. She may check in with you at various points during the performance.

The Space: Tarragon Theatre, Mainspace Dressing Room (Small)

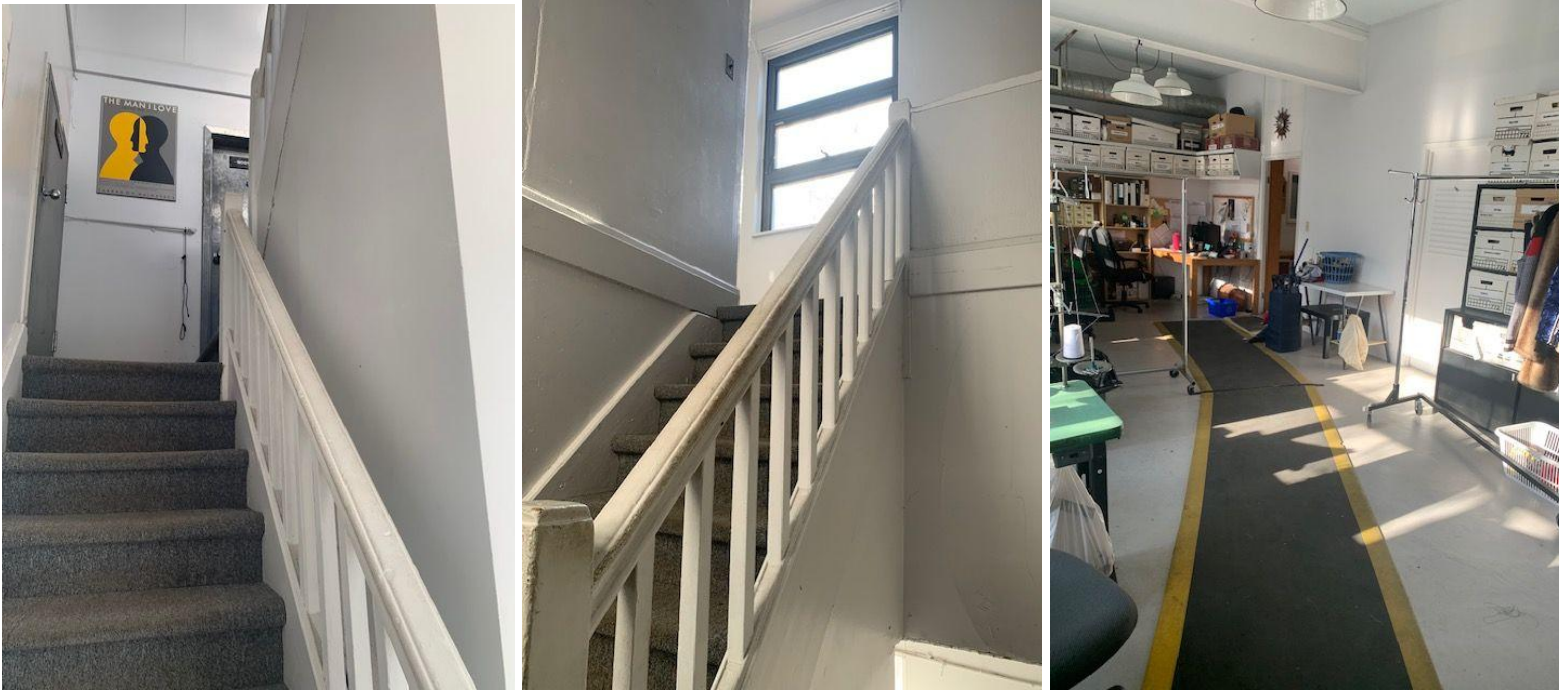
30 Bridgman Avenue, Toronto. There is information [here](#) about getting to the theatre.



A view of the performance space.

- When you arrive at the theatre, enter through the main doors on Howland Avenue. The box office will be right at the entrance, and there are benches to your left. Please wait on the benches, and Shira will come and get you when your performance is beginning. She will lead you through a door and up a number of stairs to the second floor. There are public washrooms on the main floor.





- You'll follow Shira through some administrative spaces to the performance space. There will be a coat rack outside of the space, and you'll be invited to leave your outdoor items there, including footwear. The performance space is in a locked area that isn't accessible to the public.

- Shira will give you further directions when you enter the performance space. You'll be invited to take some time to look around the space.

The Performer:



Shira Leuchter (she/her) is the only performer in *The Haunting*. She'll introduce herself to you. You don't need to remember her name. She'll be wearing a navy painter's coverall.

ABOUT THE PERFORMANCE

Shira will invite you into the performance space and give you time to look at the objects in the room. After a couple of minutes, she will invite you to sit in a chair and the audio will begin. You'll hear some audio narrative, some audio interview, some live performance. You'll see some live performance and some video projection. As this is a work-in-progress, some elements may change over the course of the festival.

There are moments when Shira will ask you if she can turn off the lights. Please let her know what you're comfortable with. She will ask you some questions related to ghosts. You can choose to respond as you wish. Shira will guide these interactions. She will also ask you to move to certain places, to lie down, and to sit by a table.

Towards the end of the performance, Shira will conduct a kind of seance. She will ask you to put on a blindfold, roll up your sleeve(s) and will paint on your arm(s) using children's finger paint and brushes. She will then use print paper to make a monoprint of the painting. This means that she'll lightly press the paper over your arm and gently rub so that the paint transfers to the paper. There is a washroom in the space for you to wash your arm(s); the paint comes off very easily. There will be a clean towel for you to dry up.

At the end of the performance, Shira will thank you and lead you back down to the lobby.

Some people may like the performance and some may not like it, or some people may not feel sure of how they feel. It's alright to feel any way you want after a theatre performance.