

Mischief
Tarragon Theatre
Fact Sheet

This fact sheet has key information about the show and the theatre that you may find useful and that may help you to fully enjoy your time with us.

Key Information

Location:	Tarragon Theatre Mainspace
Address:	30 Bridgman Ave Toronto ON M5R 1X3
Onstage:	January 15th - February 8th Tues - Sat at 7:30pm and Sat - Sun at 2:00pm
Previews:	January 15th - January 20th Tues - Sat at 7:30pm and Sun at 2:00pm
Mask Required	
Performance:	Sat January 24th at 2:00pm
Preshow Tarragon Talk:	Tue January 27th 6:00pm - 7:00pm
Postshow Talk Backs:	Sun January 25th, Thur January 29th, Sun February 1st, Thur February 5th
Relaxed Environment:	Sat January 31st 2:00pm
Student Matinées:	Fri January 16th, Wed January 28th, and Wed February 4th at 1pm. Tue February 3rd at 10:30am.
Performance Length:	Approximately 110 minutes including intermission
Intermission:	There is a 15 minute Intermission for this show.
Quiet Room:	There is no Quiet Room for this show.
Late Entry:	Is permitted for this show (Details on page 3).
Reentry:	Is permitted for this show (Details on page 3).

House Program: [click for House Program](#)

Venue Guide: [click for Venue Guide](#)

Audience Resource Guide: [click for Audience Resource Guide](#)

General Things to Know

- Tarragon has two (2) theatres: the Mainspace and the Extraspace.
- This show is performed in the Mainspace, which seats 202 people.
- Evening performances start at 7:30pm. Afternoon performances start at 2:00pm. Student Matinées start at 1:00pm.
- Digital tickets are emailed to you when you book them and will be emailed again on the morning of the performance.
- If you arranged to have your ticket printed for pickup, please arrive 30 minutes before the show starts to get it from the Box Office.
- The lobby has benches to sit on and make yourself comfortable on.
- The Bar/Concessions is open for all performances except Student Matinées.
- Food cannot be eaten in the Mainspace, but can be eaten in the Lobby. Drinks are allowed in the Mainspace. Hot drinks must have a lid.
- Tarragon Theatre only requires masking for certain performances. However, you are welcome to wear one in and around the venue at any time. Please note that some staff may wear masks, but it is not required for staff to be masked.
- The women's washroom is on the ground floor.
- The men's washroom, all gender washroom, and single-stall accessible washroom are on the second floor.
- The second floor can be reached by stairs or elevator.

- This show has assigned seating.
- You can find your seat assignment on your digital or printed ticket.
- The Mainspace will open 30 minutes before the performances, at this time the ushers will start scanning tickets so people can go in and take their seats.
- An Usher will tell you where to find your seat when they scan your ticket.
- Your mobile phone should be set to silent during the performance.
- The Mainspace is air conditioned in warmer weather and may be cold when you first enter. It will quickly heat up once the show begins.
- The lights over the audience will be lowered and it will be dark. Then the performance will start. For the **Relaxed Environment** performance it will not be fully dark. Instead, the lights over the audience will remain on at 40%.
- If you need to leave during the performance for any reason, you can. When an usher notices you trying to leave, they will help you exit to the lobby using the doors you entered from.
- Late Entry is permitted for *Mischief* up to 15 minutes after the performance begins. If you arrive after the performance has already started, please talk to the Box Office staff and they will let you in at an appropriate moment.
- Reentry is permitted for *Mischief*. If you wish to return to the Mainspace and the performance, please talk to the Box Office staff and they will let you back in at an appropriate moment. They may direct you to a different seat depending on how full the Mainspace is and where your original seat was.

About *Mischief*

This is the World Premier of *Mischief* by Lisa Nasson.

Brooke is perfectly content with her job selling cigarettes to the local fisherman at her uncle's convenience store on the Rez. But what happens when a woman appears in a utility closet and claims to have known her mother? And where can she turn when one act of mischief derails her peace?

A heartwarming story where ancestry and the cost of justice collide, *Mischief* is a gentle comedy from lauded Mi'kmaw artist Lisa Nasson that celebrates the power of community.

About the Performance

Here are some things about this show you may find interesting or helpful as an audience member:

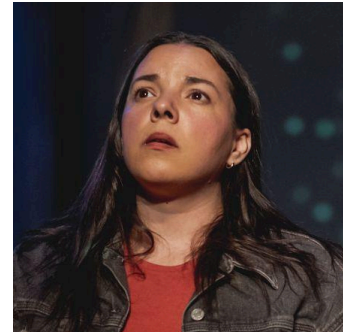
- *Mischief* has been in development for many years, but this is its first full scale production.
- *Mischief* was first performed during the Fall of 2025 in the city of Halifax where it is set, with the show having now travelled to Toronto to complete its run.
- Lisa Nasson, who wrote the play, also performs in it as Brooke.

Performer and Character Information

Performer: Lisa Nasson

Character: Brooke

Character Info: Brooke is a young Mi'kmaw woman. She works as a cashier at her Uncle Chris' convenience store.



Performer: Jeremy Proulx

Character: Uncle Chris

Character Info: Uncle Chris is a middle aged Mi'kmaw man. He is Brooke's maternal uncle. He owns and runs a convenience store.



Performer: Trina Moyan

Character: Tammy

Character Info: Tammy is a middle aged Mi'kmaw woman. She is a close family friend of Uncle Chris and Brooke.



Performer: Nicole Joy-Fraser
Character: Emily
Character Info: Emily is the spirit of Brooke's Ancestor from almost 300 years ago.



Performer: Devon MacKinnon
Character: Fisherman Fred
Character Info: Fisherman Fred is a middle aged white man. He is a frequent customer at Uncle Chris' convenience store.



Performer: Devon MacKinnon
Character: Good Guy
Character Info: Good Guy is a middle aged white man. He lives near Point Pleasant Park in Halifax.



Production Photos by Jae Yang

Content Advisory

Please note that the Fact Sheet contains spoilers from this point on .

Mischief deals with and presents content which may be difficult for some, including: smoking, colonialism, grieving a lost loved one, Missing and Murdered Indigenous Women/Girls/2-Spirit people, anti-Indigenous racism, misogyny, police/carceral systems, violence against Indigenous peoples, drug use, vandalism, panic attacks, fireworks, employee harassment, infidelity, body image, and climate change.

- There is swearing/crass language throughout the performance.
- There is sexual innuendo once during the performance.
- A character lights and smokes a prop cigarette once during the performance.
- This show discusses 'The Scalping Proclamation' which was a cash bounty paid to settlers in Halifax for killing members of the Mi'kmaq Tribe.
- Characters sometimes talk about feeling nauseous during the performance. No character actually throws up. No gagging sounds are made.
- A performer uses the audience walkways during the performance. An usher will inform the people sitting close to where the actors will walk before the performance starts.

Sensory Advisory

- Flashing/Flickering lights and projections are used a few times during the performance, however, strobelights are not used.
- Fog and Haze are used a few times during the performance. This element will be removed during the **Relaxed Environment** Performance.
- Loud music/sound is played at certain moments in the performance. The volume of these sounds will be lowered for the **Relaxed Environment** Performance. If something is ever too loud you can cover your ears with your hands or put on sound dampening headphones if you brought them. The Box Office can provide earplugs upon request.
 - Characters raise their voice/yell several times during the performance.
 - Characters sing and drum twice during the performance.
 - The sound of fireworks is played at the end of Act One (1), the start of Act Two (2), and the end of Act Two (2). The volume of these sounds is significantly quieter than real fireworks.
 - During Act Two (2) the sound and coloured lights of police sirens are used.
- An echo effect is applied whenever Emily speaks during the performance.
- Colourful images are projected onto the set throughout the production. The images are generally sedate and slow in their transitions, with two (2) exceptions:
 - When Brooke drives a car in Act One (1) the sped up perspective of looking out a moving vehicle's window is played. If the images are too overwhelming you can close your eyes or look away from the stage.

- The image of a blooming firework is projected onto the set at the very end of Act One (1) and the very start of Act Two (2)

Relaxed Environment Performances

There will be a Relaxed Environment Performance of *Mischief* on Sat January 31st at 2:00pm. During this performance the following will be offered:

- The lights over the audience will remain on at 40%.
- All recorded sound and music will be capped at 65 decibels. However, the voices of the performers onstage may exceed that volume at times.
- All Fog and Haze effects will be removed.
- Trained Front of House staff.
- Invitation to audience members to enter and exit the theatre as they wish, make sound, and move around.
- Audience members may use their devices as needed and keep their phones on vibrate.
- A selection of seats in the back row of the theatre will be available for patrons to relocate should they wish to move further from the stage during the performance.
- A Venue Guide, Fact Sheet, and educational Audience Resource Guide will be available.
- Pre-show visits to the theatre for familiarization can be booked with our Education and Community Access Manager. Please contact Heather Caplap at education@tarragontheatre.com or 416-531-1827 x249 to book.

Plot Summary

Act One (1)

- Images of marine life are projected onto the set as Brooke arrives at work.
 - Fisherman Fred enters the convenience store.
 - He buys cigarettes and antagonizes Brooke, then he leaves.
 - Uncle Chris enters the convenience store.
 - They talk about the price of fireworks.
 - Tammy enters the convenience store and ends an emotional phone call.
 - The three of them discuss the protests that are happening in the city.
 - Tammy leaves. Then the lights in the store flicker.
 - Uncle Chris leaves and Brooke turns on the radio.
 - The radio plays a news story about people protesting to have a statue of the founder of Halifax, Edward Cornwallis, removed because of the violence and death he caused Indigenous communities.
-
- The power in the store goes out, so Brooke goes to the storage room to try and fix it.
 - Brooke encounters Emily in the storage room.
 - Emily tries to explain that she is Brooke's ancestor sent to her by Creator, but Brooke doesn't believe it.
 - Emily says she was also sent to Brooke's mother and shares stories about her she shouldn't be able to know.

- The power in the store comes back and Emily vanishes.
-

- The next day, Uncle Chris and Tammy are armwrestling in the store.
 - Tammy wins and Uncle Chris agrees to lend her his truck for the day to bring supplies to the ongoing protest.
 - They talk about today marking three (3) years since Uncle Chris' sister, Brooke's mother, disappeared.
 - Brooke arrives at the store and starts to work.
 - Uncle Chris tries to distract Brooke from her grief, but she snaps at him and he leaves to get his truck for Tammy.
 - Tammy shows Brooke the sign she made for the protest.
 - Uncle Chris comes back to give Tammy his keys and they both leave.
-

- Fisherman Fred enters the convenience store.
- He buys cigarettes and continues to antagonize Brooke.
- Fisherman Fred talks about the ongoing protest.
- Brooke tells Fisherman Fred how badly he smells in great detail.
- Fisherman Fred leaves.
- The power goes out in the store.
- Brooke goes to the storage room and finds Emily singing and drumming.
- Emily and Brooke debate the value of trying to change seemingly insignificant things.
- Emily tells more stories about Brooke's mother.

- The lights turn back on and Emily disappears.
-
- Tammy enters the store yelling.
 - Brooke calms Tammy down.
 - Uncle Chris arrives and Tammy immediately starts apologizing to him.
 - They explain to Brooke that someone vandalized Uncle Chris' car while Tammy was at the protest.
 - The power goes out.
 - Emily cries out from a pain in her head, then vanishes.
 - Brooke takes the keys to Uncle Chris' truck and runs out of the store.
 - Brook drives to the city. This is represented by projections on the set of the sped up perspective of looking out a moving vehicle's window. If the images are too overwhelming you can close your eyes or look away from the stage.
 - Brooke lights a firework and throws it at the statue of Edward Cornwallis, blowing it up, as the image of a blooming firework is projected onto the set.

INTERMISSION

Act Two (2)

- The image of a blooming firework is projected onto the set as Brooke runs into Point Pleasant Park to get away from distant police sirens.
- As Brooke contemplates what she just did, Good Guy accidentally hurts himself nearby in the park.
- Good Guy sees Brooke and starts up a conversation with her.
- Brooke and Good Guy talk about the historical and contemporary treatment of Indigenous people in Canada.

- Brooke convinces Good Guy to help her gather supplies to build a wigwam for a Mi'kmaq ceremony she has made up.
 - Brooke builds a small Tipi from branches Good Guy brings her.
 - Brooke and Good Guy talk about the protests and Edward Cornwallis.
 - Brooke tells Good Guy the story of her mother's disappearance.
 - A voice comes through Good Guy's walkie-talkie revealing that he is a police officer.
 - Brooke panics and asks Good Guy if he plans to arrest her for damaging the statue.
-

- Tammy and Uncle Chris are in the convenience store.
- Tammy is recounting social media posts about Edward Cornwallis' statue getting blown up.
- Uncle Chris is anxious about Brooke still being gone.
- Brooke arrives at the convenience store.
- Tammy tells Brooke about the statue getting blown up and Brooke pretends it is the first she's heard of it happening.
- Brooke apologizes to Uncle Chris for scaring him.
- Brooke goes to the storage room hoping Emily will be there, but all she finds is Emily's hat.
- Brooke is shown fragments of the other characters' memories:
 - Emily on the night she was killed.
 - Tammy and Uncle Chris feeling the fresh grief of Brooke's mother going missing.
- Brooke puts on Emily's hat. **THE END**

Set Description and Photos

The set of *Mischief* looks like a convenience store inside the skeleton of a whale's ribcage.



Five enormous archways recede toward the back of the stage, each one narrower than the last. The arches are designed to look like rib bones. Connecting the ribs along each side are several shelves containing items you usually find in a convenience store: snacks, soda, canned goods, cleaning supplies, etc. At the back of the stage is a wooden stool, a broom, and a plastic bucket.

Above and around the largest rib, closest to the audience, is a metal wall. There are two doors made of the same metal, one on each side of the rib. At the base of the widest rib, closest to the audience, are two steps which span the full length of the stage. The front corners of the stage each have a countertop which are also designed to look like whale bones. On the left side counter is a cash register. On the right side counter is a radio.

During intermission, all the items from the shelves and counters are removed from the set and images are projected onto it so that the rib bones blend in with the trees of a park.



Set Design by Andy Moro

Contact Information:

If you have any questions or concerns about this Fact Sheet or planning a visit to Tarragon Theatre please reach out.

We love feedback on our accessible programming, if there is anything you would like to share please send us an email or give us a call.

Heather Caplap

Education and Community Access Manager

Email: education@tarragontheatre.com

Phone: 416-536-5018 x 249

Natasha Parsons

Director of Patron Services

Email: patronservices@tarragontheatre.com

Phone: 416-531-1827 x 221

Address

[30 Bridgman Avenue](#)

[Toronto, Ontario, M5R 1X3](#)